

RASPBERRY PI STYLE ENCLOSURES

Pi Camera Enclosure

UNIVERSAL
ENCLOSURES

HAND
HELD
CASES

HEAVY
DUTY
ENCLOSURES

DIN
RAIL
BOXES

INTERFACE
SUPPORTS

CONTROL
STATIONS

DIECAST
& METAL
BOXES

DESKTOP &
INSTRUMENT
CASES

POTTING
BOXES

19"
ENCLOSURES

19"
SUBRACKS

CUSTOM
SIZED
ENCLOSURES

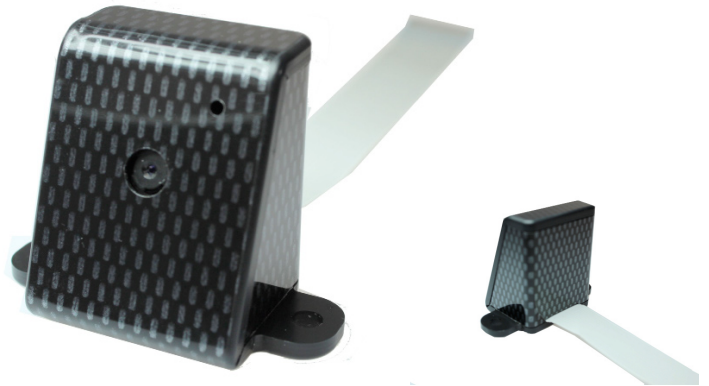
CUSTOM
SERVICES

No screws, no glue – just add your *Raspberry Pi* Camera!

- Designed to house the *Pi Camera* via clip-in grooves - **NO SCREWS REQUIRED!**
- All cut-outs are pre-cut into the case - **NO MODS REQUIRED!**
- Wall mountable
- High **Gloss Finish**

Material:

- Thickness 3mm: HB Rated
- Coloured Materials: High Impact Polystyrene (HIPS)
- Carbon Fibre Finish: Acrylic Capped ABS



Raspberry Pi Camera not included

Available in a range of colours: Gloss Finish



Crystal Clear

White

Black

*Carbon Fibre

* Carbon fibre finish:Acrylic capped ABS

CB PART NO.	COLOURS
CBRPC-WHT-NL	White
CBRPC-CAR-NL	Carbon Fibre
CBRPC-BLK-NL	Black
CBRPC-CLR-NL	Crystal Clear